



# A Journey Through Art Field

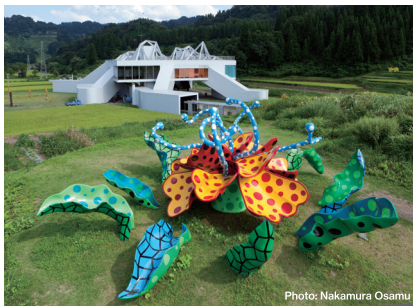
## Featured Facilities & Outdoor Artworks

※ | Last Entry 30 min. Before  
★ | From Oct. ~ Closed 16:00

Open year-round

🍴 Lunch ☕ Café & Light Meals  
♨️ Hot Spring 💳 Credit Cards Accepted

### 1 Matsudai NOHBUTAI Field Museum



Directly connected to Matsudai Sta.

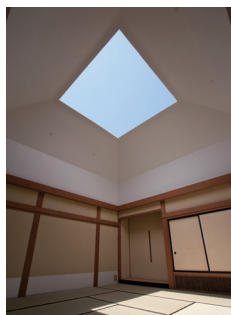
#KusamaYayoi #Buffet  
#OutdoorArtworks #SnowCountry  
#LocalHistoryMuseum #Agriculture

- Matsudai NOHBUTAI, Matsudai Local History Museum 10:00-17:00\*
  - Echigo Matsudai Satoyama Shokudo 10:00-17:00 Lunch 11:00-14:00 L.O.
  - The Monument of Tolerance, Matsudai Castle 10:00-17:00\*★
- \*Some artworks are not available for viewing during winter.

Open year-round  
Closed on Tue. & Wed.

🕒 60 min. ~

### 18 House of Light



#Light  
#Architecture  
#OvernightStayAvailable  
#JamesTurrell  
#BestOnSunnyDays

Open year-round  
Nov.-Mar. | 11:30-15:00※  
Apr.-Oct. | 12:00-15:30※

🕒 15min. ~



### Museum on Echigo-Tsumari, MonET, Akashinoyu



#Architecture  
#HotSpring #MuseumShop  
#ArtMuseum #Cafe  
#GreatForRainyDays  
#LeandroErlich

10 min. on foot from Tokamachi Sta.



Open year-round  
Closed on Tue. & Wed.

🕒 60min. ~

● MonET 10:00-17:00※  
● Akashinoyu 11:00-21:00※ (Winter-20:00※)

### 16 Ubusuna House

#Kominka #Pottery  
#LocalCuisine

Open Irregularly  
10:00-16:00  
\*Lunch 11:00-14:00 L.O.

🕒 60min. ~



\*Menu items are subject to change.

### Interactive Children's Sensory Museum NUNAGAWA Campus

Open Irregularly  
10:00-17:00★

🕒 60 min. ~

#Workshop  
#FamilyFriendly  
#TouchAndPlay  
#AllDayFun



### Echigo Matsunoyama Kyororo Forest School



#Plants  
#Experience  
#ScienceMuseum  
#Insects  
#Workshop

Open year-round  
Closed on Tue.  
Apr.-Nov. | 9:00-17:00※  
Dec.-Mar. | 9:00-16:00※

🕒 60 min. ~



### 7 The Last Class

#AbandonedSchool  
#Memory #Sound  
#ChristianBoltanski

Open Year-Round  
Closed Tue. & Wed.  
\*Winter: Closed Weekdays  
10:00-17:00★

🕒 30min. ~



### Hong Kong House, Echigo-Tsumari "Kamigo Clove Theatre"

Open Irregularly  
10:00-17:00★

🕒 40min. ~

#Artist-in-Residence #Music  
#Theatre #Dance  
#AbandonedSchool  
#Restaurant (LimitedTimeOnly)



### 11 Akeyama Arts Center



#History  
#Matagi  
#Fieldwork  
#CulturalAnthropology  
#AbandonedSchool  
#HiddenPlace

Open Irregularly  
10:00-17:00★

🕒 60min. ~



### Kiyotsu Gorge Tunnel

Open Year-Round  
\*Closed during winter depending on snowfall conditions.

🕒 60min. ~

#Tunnel  
#NationalPark  
#Architecture  
#ReservationRequired (SelectedTriods)  
#ThreeGreatGorgesOfJapan

